

ELECTRICAL SPECIFICATIONS

RESISTANCE-----	10K OHMS
RESISTANCE TOLERANCE-----	±15%
LINEARITY (INDEPENDENT)-----	±3.0%
POWER RATING FOR X AND Y AXIS-----	0.13 WATT
POWER RATING FOR Z AXIS-----	0.3 WATT
LEVER ELECTRICAL ANGLE X,Y AXIS-----	40°
LEVER ELECTRICAL ANGLE Z AXIS-----	90°
RESOLUTION-----	ESSENTIALLY INFINITE
OUTPUT SMOOTHNESS-----	BELOW 0.2% AGAINST INPUT VOLTAGE
CONTACT RESISTANCE VARIATION-----	BELOW 5% C.R.V.
INSULATION RESISTANCE-----	1000 MEGA OHMS @ 500VDC.
DIELECTRIC STRENGTH-----	1 MINUTE AT 500 VAC
MAX. WIPER OUTPUT-----	1 mA RECOMMENDED, 5 mA MAX.

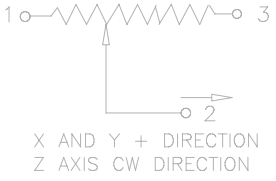
MECHANICAL

RANGE OF OPERATING LEVER-----	±20° ~ ±25° BI-DIRECTIONAL FROM CENTER.
OPERATING ANGLE Z AXIS-----	±45° ~ ±50° BI-DIRECTIONAL FROM CENTER.
OPERATING FORCE FOR X&Y AXIS-----	APPROX. 7.05 TO 24.69 OZ-F.
OPERATING FORCE FOR Z AXIS-----	APPROX. 2.78 TO 6.94 OZ-F.
OPERATING TEMPERATURE-----	-20°C TO +65°C
LIFE EXPECTANCY-----	5 MILLION OPERATIONS
WEIGHT-----	APPROX. 11 OZ.

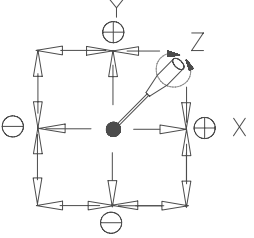
MATERIALS

HOUSING-----	ALUMINUM.
ELEMENT-----	CONDUCTIVE PLASTIC
KNOB-----	HARD PLASTIC

SCHEMATIC

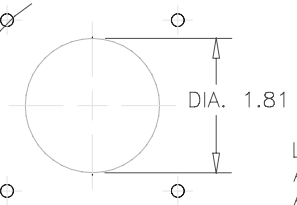


"K" LEVER OPERATION



.137 DIA. MOUNTING HOLES
4 PLACES ON 1.08 RADIUS

PANEL ARRANGEMENT



NOMENCLATURE

- J50-K Y 3 0-F B
- RUBBER BOOT. (LEAVE BLANK IF NOT DESIRED)
- (F) FRICTION HOLD WITH CENTER DETENT.
- No. OF SWITCHES. (HANDLE)
- No. OF POTENTIOMETERS.
- HANDLE DESIGN
- LEVER DIRECTION
- JOYSTICK SERIES

SCALE	DATE: 6-2-06
NONE	AT
CODE	IDENT: 19477



TITLE	JOYSTICK
-------	----------

PART NO.	J50-4082
----------	----------

REV.	BY	DATE	P/N J50-4082
A	AT	10-6-06	"K" PATTERN WAS "C" PATTERN

