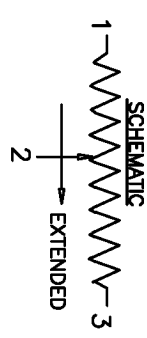


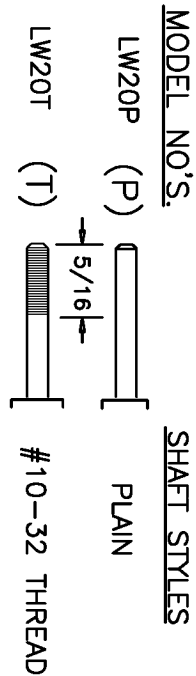
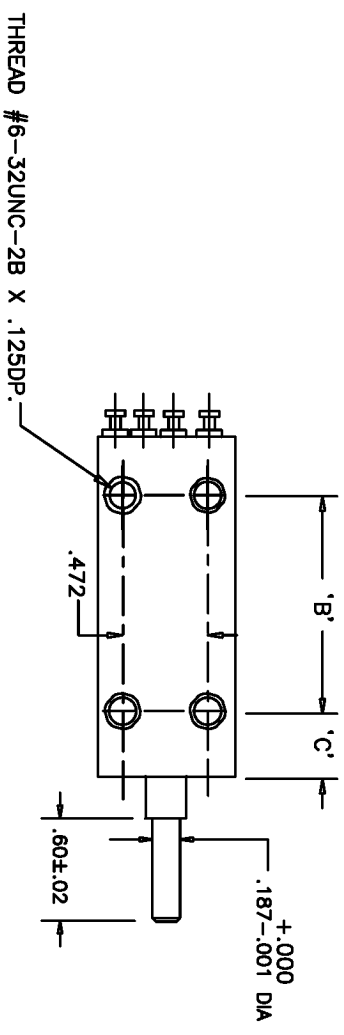
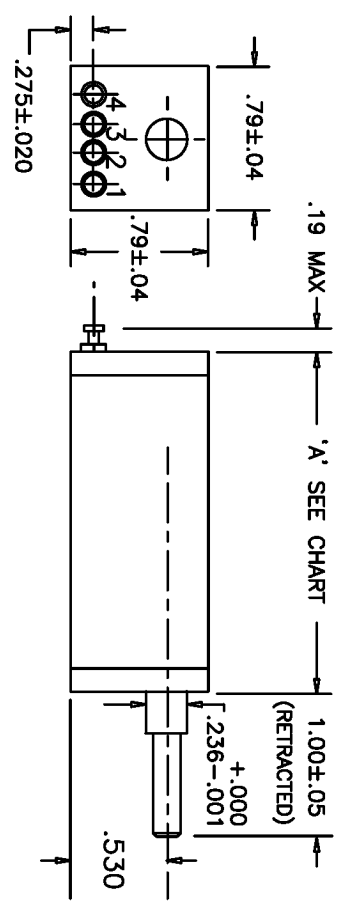
ELECTRICAL
 RESISTANCE RANGE _____ SEE CHART
 RESISTANCE TOLERANCE _____ ±5%
 LINEARITY, INDEPENDENT _____ SEE TABLE
 RESOLUTION _____ SEE CHART
 MINIMUM RESISTANCE _____ 1 OHM OR 0.1%
 STROKE _____ SEE TABLE
 NOISE _____ 100 OHM MAX.
 POWER RATING @40°C _____ SEE TABLE
 INSULATION RESISTANCE _____ 100 MEGOHMS AT 1000 VDC
 DIELECTRIC STRENGTH _____ 1 MIN @ 1000VAC

MECHANICAL
 STROKE _____ SEE TABLE
 STOP STRENGTH _____ 10 LBS MIN.
 LIFE _____ 100,000 STROKES
 MARKING: ETI SYSTEMS
 SCHEMATIC, DATE CODE, RESIST., LIN
 NATIONAL ORIGIN

ENVIRONMENTAL
 OPERATING TEMPERATURE RANGE _____ 30°C TO 105°C
 TEMPERATURE COEFFICIENT _____ SEE CHART
 NON-STANDARD OPTIONS
 SPECIAL RESIS. & LINEARITY
 MACHINED SHAFTS
 EXTRA TAPS



TERM. 4 IS USED FOR OPTIONAL TAPS ONLY



DIMENSION TABLE

DASH NO.	APPROX WEIGHT	MECHANICAL STROKE +0.80-.000	ELEC. STROKE ±.020	RESIS. RANGE	LINEARITY STANDARD	A ±.04 ±.02 ±.04	B ±.04	C ±.04	POWER RATING	FRICTION MAX.
-15	1.8 OZ	.590	.590	500-10K	2.0% / 1.0%	1.97	984	500	.3 WATTS	1.8 OZ.
-30	2.4 OZ	1.180	1.180	500-10K	1.0% / 0.5%	2.56	1.57	.500	.6 WATTS	1.8 OZ.
-50	3.6 OZ	1.968	1.968	500-10K	0.7% / 0.4%	3.35	1.97	.690	.75 WATTS	3.6 OZ.
-100	4.3 OZ	3.937	3.937	1K-20K	0.5% / 0.25%	5.32	3.94	.690	1.25 WATTS	3.6 OZ.

RESOLUTION TABLE

DASH NO.	RESISTANCE OHMS	15	25	50	100	200	500	1K	5K	10K	15K	30K
-15		1.7	1.4	1.2	.87	.90	.72	.63	.44	.29		
-30		.59	.67	.53	.42	.48	.36	.28	.17	.13		
-50		.50	.39	.30	.24	.25	.20	.12	.09	.08		
-100		.25	.19	.15	.12	.12	.09	.07	.05	.04		

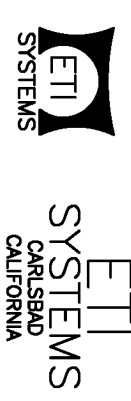
TEMPERATURE COEFFICIENT 80 PPM/°C

TOLERANCES

XX = +/- .010" FRACT. = +/- 1/64"
 XXX = +/- .005" ANGLES = +/- 1/2"
 ALL SPECIFICATIONS SUBJECT TO CHANGE WITHOUT NOTICE.

SCALE	DATE: 4-25-86
NONE	BY BT
APPR'D	

CODE IDENT: 19477



TITLE
 LINEAR MOTION POTENTIOMETER

PART NO.
 LW20