

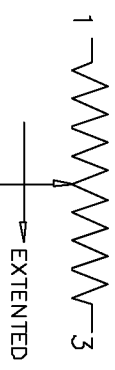
ELECTRICAL
 RESISTANCE RANGE ----- SEE CHART
 RESISTANCE TOLER. ----- ±5%
 NOISE ----- 100 OHM MAX
 INSULATION RESISTANCE ----- 100 MEGOHMS AT 500 VDC
 DIELECTRIC STRENGTH ----- 900VDC MIN
 END RESISTANCE ----- 1 OHM OR 0.1% OF TOTAL
MECHANICAL
 STOP STRENGTH ----- 10 LBS MIN
 LIFE ----- 2,000,000 STROKES
 AGULATION FORCE ----- 12 OZ.
 MARKING:ETI SYSTEMS
 SCHEMATIC,DATE CODE,RESIS,LIN.
 NATIONAL ORIGIN
ENVIRONMENTAL
 OPERATING TEMPERATURE ----- -30°C TO +105°C

NON-STANDARD OPTIONS
 RESIS.TOL ±3%
 MACHINED SHAFTS
 EXTRA TAP
 HYBRID ELEMENT
 CONDUCTIVE PLASTIC ELEMENT
 SPECIAL LINEARITY
 OIL FILED

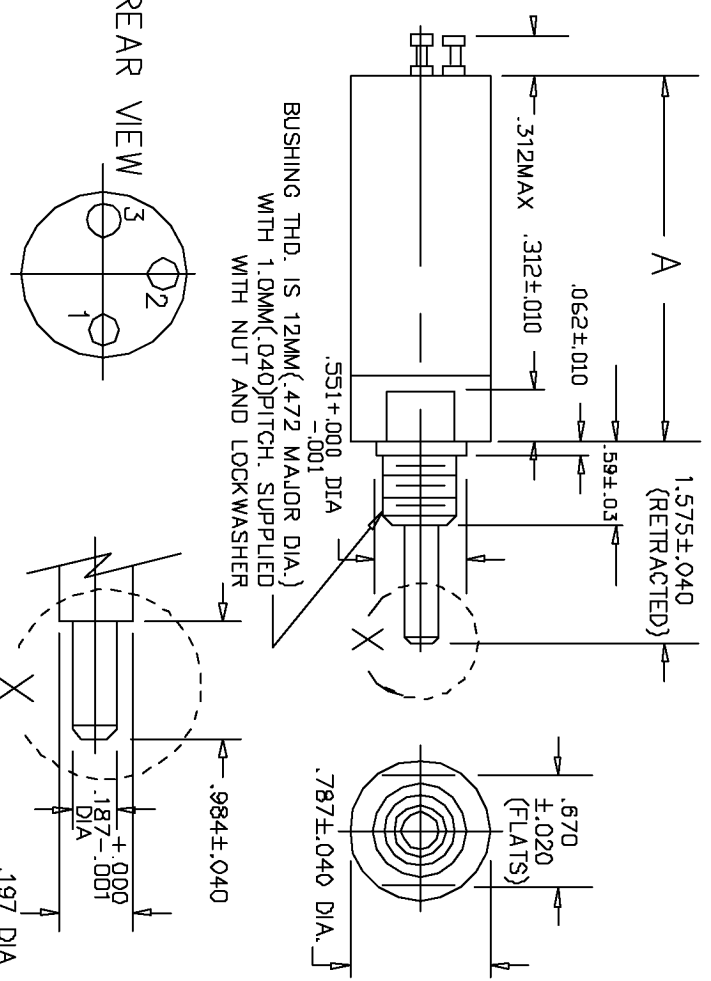
RESOLUTION CHART

RESISTANCE DASH NO.	POWER RATING	10	25	50	100	200	500	1K	2K	5K	10K	20K	50K
LWR20-15	0.5W	1.3%	1.2%	0.87%	0.90%	0.72%	0.53%	0.44%	0.39%	0.29%			
LWR20-50	0.75W		0.42%	0.34%	0.26%	0.21%	0.21%	0.17%	0.14%	0.10%	0.08%		
LWR20-100	1.0W			0.21%	0.16%	0.13%	0.14%	0.11%	0.08%	0.06%	0.05%	0.04%	
LWR20-152	1.5W			0.16%	0.12%	0.11%	0.10%	0.09%	0.07%	0.05%	0.04%	0.03%	
LWR20-200	2.0W				0.10%	0.08%	0.06%	0.07%	0.05%	0.04%	0.03%	0.025	0.018

SCHEMATIC



REV.	BY	DATE	PART NO.
F	BT	12-06 91	LWR20



REAR VIEW

WEIGHT	DASH NO.	MECHANICAL STROKE±.06	ELECTRICAL STROKE±.04	RESISTANCE RANGE=OHMS	LINEARITY
.3LB.	-15	6.530	.590	10 - 5K	±1.0%
.3LB.	-50	2.087	1.968	25 TO 20K	±0.7%
.35LB.	-100	4.055	3.937	50 TO 20K	±0.5%
.35lb.	-152	6.118	6.000	80 TO 50K	±0.5
.70LB.	-200	7.992	7.874	100 TO 80K	±0.5%

WIREWOUND RESISTANCE ELEMENT

TOLERANCES

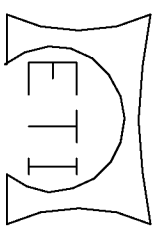
XX = +/- .010* FRACT. = +/- 1/64*
 XXX = +/- .005* ANGLES = +/- 1/2*
 ALL SPECIFICATIONS SUBJECT TO CHANGE WITHOUT NOTICE.

SCALE	NONE
DATE:	5-13-86
BY	
APPRV'D	BT
CODE IDENT:	19477

TITLE

LINEAR MOTION POTENTIOMETER

THIS DOCUMENT CONTAINS PROPRIETARY DATA OF POLARIS INDUSTRIAL ENTERPRISES, INC. NO DISCLOSURE, REPRODUCTION, OR USE OF ANY PART THERE OF MAY BE MADE EXCEPT BY WRITTEN PERMISSION.



CARLSBAD CALIFORNIA

PART NO. LWR20