

**SPECIFICATIONS**

**ELECTRICAL**

RESISTANCE RANGE \_\_\_\_\_ 1/2 OHM TO 300K OHM  
 RESISTANCE TOLERANCE \_\_\_\_\_ ±5%  
 LINEARITY, INDEPENDENT \_\_\_\_\_ SEE CHART  
 RESOLUTION \_\_\_\_\_ SEE CHART  
 END RESISTANCE \_\_\_\_\_ 1 OHM OR 1%  
 ELECTRICAL TRAVEL \_\_\_\_\_ SEE CHART  
 NOISE \_\_\_\_\_ SEE CHART  
 POWER RATING \_\_\_\_\_ 100 OHMS MAX  
 INSULATION RESISTANCE \_\_\_\_\_ SEE CHART  
 DIELECTRIC STRENGTH \_\_\_\_\_ 100 MEGOHMS @ 1000 VDC  
 1000 VAC MIN.

**MECHANICAL**

NUMBER OF TURNS \_\_\_\_\_ SEE CHART  
 MECHANICAL TRAVEL \_\_\_\_\_ SEE CHART  
 TORQUE, ROTATIONAL \_\_\_\_\_ 1.7 OZ.IN.  
 SHAFT END PLAY \_\_\_\_\_ .005 T.I.R.  
 LIFE (SHAFT REVOLUTIONS) \_\_\_\_\_ SEE CHART  
 STOP STRENGTH \_\_\_\_\_ 125 OZ.IN. MIN.

**ENVIRONMENTAL**

OPERATING TEMPERATURE \_\_\_\_\_ -55°C TO 105°C  
 TEMPERATURE COEFFICIENT \_\_\_\_\_ SEE CHART  
 VIBRATION \_\_\_\_\_ 10HZ TO 2000HZ 15G  
 SHOCK \_\_\_\_\_ 50G 11MS  
 MOISTURE RESISTANCE \_\_\_\_\_ 40°C 95%RH 120 HOURS

**OPTIONS**

SPECIAL SHAFTS \_\_\_\_\_  
 BUSHING MOUNT \_\_\_\_\_  
 DUAL GANGS \_\_\_\_\_  
 SPECIAL LINEARITY \_\_\_\_\_  
 SPECIAL RESISTANCES \_\_\_\_\_

**% RESOLUTION AND TEMPERATURE COEFFICIENT CHART**

RESIS. MODEL	# SLIDEWIRE (INFINITE RESOLUTION)										ELECTRICAL TRAVEL	MECHANICAL TRAVEL	LINEARITY (IND.)	NO. OF TURNS	POWER RATING @ 40°C	ROTATIONAL LIFE (TURNS)	WEIGHT	A DIM.		
	1	2	5	10	20	50	100	200	500	1K									2K	5K
-3	#	#	#	#	#	#	#	#	#	#	#	#	#	#	#	#	#	#	#	
-5	#	#	#	#	#	#	#	#	#	#	#	#	#	#	#	#	#	#	#	
-10	#	#	#	#	#	#	#	#	#	#	#	#	#	#	#	#	#	#	#	
TEMPCO	80 PPM/°C										20 PPM/°C		3600±5	3600+10°-0°	0.25%	10	5.0 WATTS	2,000,000	4.2 OZ.	2.42

**MATERIAL**

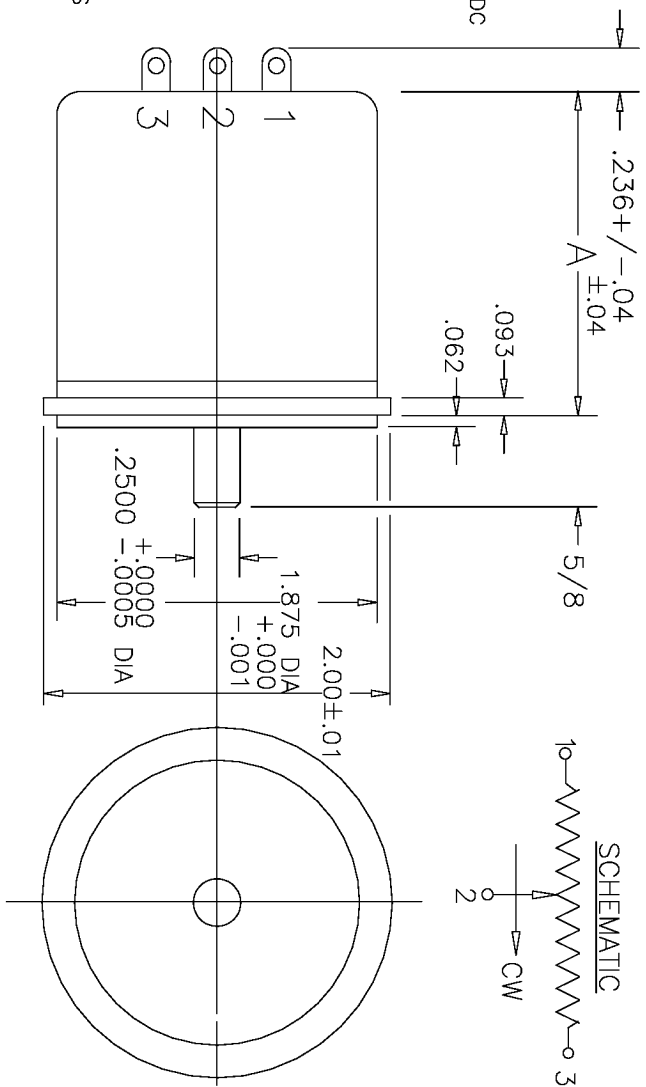
HOUSING \_\_\_\_\_ ALUMINUM, ANODIZED  
 SERVO LID \_\_\_\_\_ ALUMINUM, ANODIZED  
 SHAFT \_\_\_\_\_ STAINLESS STEEL  
 TERMINALS \_\_\_\_\_ SILVER PLATED  
 BEARINGS \_\_\_\_\_ BUSHING

**TOLERANCES**

XX = +/- .010" FRACT. = +/- 1/64"  
 XXX = +/- .005" ANGLES = +/- 1/2°  
 ALL SPECIFICATIONS SUBJECT TO CHANGE WITHOUT NOTICE.

REV.	BY	DATE	PART NO.
C	BT	10-2-00	MR46S

TERMINALS WERE TIN PLATED



THIS DOCUMENT CONTAINS PROPRIETARY DATA OF POLARIS INDUSTRIAL ENTERPRISES, INC. NO DISCLOSURE, REPRODUCTION, OR USE OF ANY PART THERE OF MAY BE MADE EXCEPT BY WRITTEN PERMISSION.

**TITLE**  
 WIREWOUND MULTI-TURN POTENTIOMETER

**ETI SYSTEMS**  
 CARLSBAD CALIFORNIA

**PART NO.**  
 MR46S