

**SPECIFICATIONS**

**ELECTRICAL**

RESISTANCE RANGE ----- 100 TO 100K  
 RESISTANCE TOLERANCE ----- ±3%  
 LINEARITY(INDEPENDENT) ----- ±.25%(10 TURN)±.35%(5 TURN)  
 ELECTRICAL ANGLE ----- 3600(10 TURN)1800(5 TURN) ±5°  
 END RESISTANCE ----- 0.2% OR 2 OHMS  
 ELECTRICAL NOISE(ENR) ----- 100 OHMS MAX  
 RESOLUTION ----- SEE CHART  
 INSULATION RESISTANCE ----- 100 MEGOHMS AT 500 VDC  
 DIELECTRIC STRENGTH ----- 500 VAC MIN.  
 POWER RATING ----- 1 WATT(10 TURN) .5 WATT (3&5 TURN)

**MECHANICAL**

NO OF TURNS ----- MW10-10(10 TURN) MW10-5(5 TURN)  
 MECHANICAL ANGLE ----- MW10-3 (3 TURN)  
 ROTATIONAL LIFE ----- 3600(10 TURN)1800(3&5 TURN)+30° -0°  
 STOP STRENGTH ----- 1,000,000 TURNS  
 STARTING TORQUE ----- 15 IN. OZ.  
 WEIGHT ----- 0.5 IN. OZ. MAX  
 0.7 OZ(10 TURN) 0.6 (3&5 TURN)

**ENVIRONMENTAL**

OPERATING TEMPERATURE --- -55°C TO +105°C  
 TEMPERATURE COEFFICIENT --- SEE CHART  
 VIBRATION ----- 10HZ TO 2000HZ 15G  
 SHOCK ----- 50G 11MS  
 MOISTURE RESISTANCE ----- 40°C 95%RH 240 HOURS

**MATERIALS**

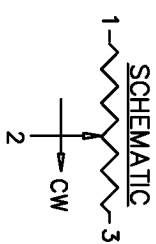
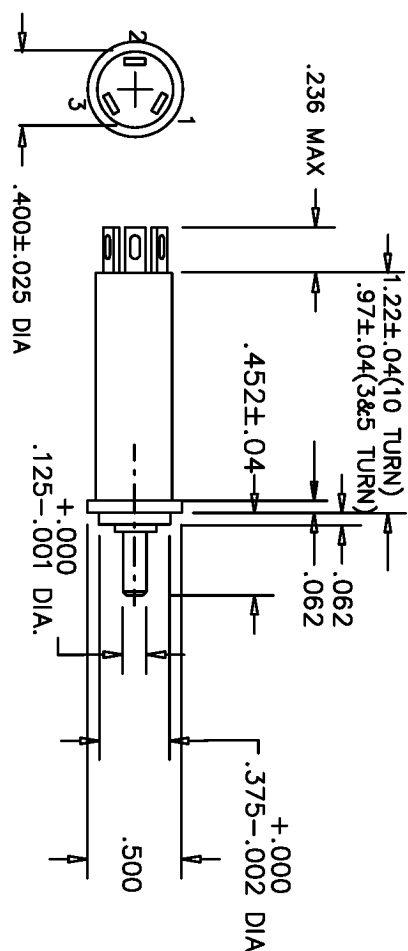
HOUSING ----- ANODIZED ALUMINUM  
 SHAFT ----- STAINLESS STEEL  
 MOUNTING ----- PLATED BRASS  
 TERMINALS ----- GOLD PLATED  
 RESISTANCE ELEMENT ----- WIREWOUND

**OPTIONAL FEATURES**

SHAFT MODIFICATIONS

REV.	BY	DATE	PART NO.
E	PD	11-18-87	MW10S

LINEARITY WAS ±.025(10 TURN)±.035(5 TURN)

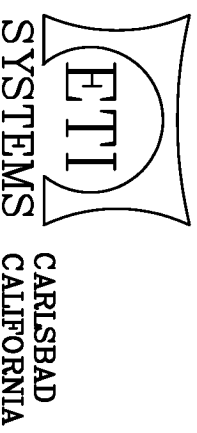


**RESOLUTION CHART**

RESISTANCE	100	200	500	1K	2K	5K	10K	20K	50K	100K
MW10S-3	.07%	.15%	.19%	.16%	.10%	.09%	.07%	.05%		
MW10S-5	.13%	.16%	.12%	.09%	.07%	.055%	.043%	.034%	.025%	
MW10S-10	.08%	.07%	.07%	.06%	.05%	.035%	.027%	.022	.016%	.013%

TEMP. COEFF. 80 PPM/°C      20 PPM/°C

THIS DOCUMENT CONTAINS PROPRIETARY DATA OF POLARIS INDUSTRIAL ENTERPRISES, INC. NO DISCLOSURE, REPRODUCTION, OR USE OF ANY PART THERE OF MAY BE MADE EXCEPT BY WRITTEN PERMISSION.



**TOLERANCES**  
 XX = +/- .010" FRACT. = +/- 1/64"  
 XXX = +/- .005" ANGLES = +/- 1/2°  
 ALL SPECIFICATIONS SUBJECT TO CHANGE WITHOUT NOTICE

**TITLE**  
 MULTI-TURN  
 POTENTIOMETER

**PART NO.**  
 MW10S