

ELECTRICAL CHARACTERISTICS.

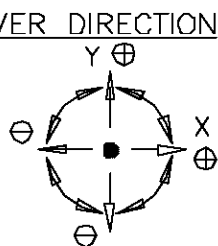
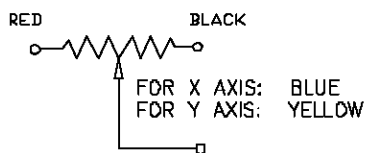
INDUCTIVE JOYSTICK

- SUPPLY VOLTAGE — — — — 4.75V - 15V
- SIGNAL SWING(FROM CENTER) — — ±50% VS
- OUTPUT SIGNAL TOLERANCE — — ±10% OF OUTPUT
- OUTPUT IMPEDANCE — — — — 1.8KOHMS±1%
- SIGNAL RIPPLE — — — — <1% OF OUTPUT
- SUPPLY CURRENT — — — — TYPICALLY 10mA
- OPERATING TEMPERATURE — — — -20°C - +55°C
- ESD IMMUNITY — — — — >12 KV
- RFI IMMUNITY — — — — 20V/m
- RFI IMMUNITY (TYPICAL) — — — >40 V/m (INSTALLED)
- PREFERRED LOAD (TYPICAL) — — — >10K

MECHANICAL CHARACTERISTICS.

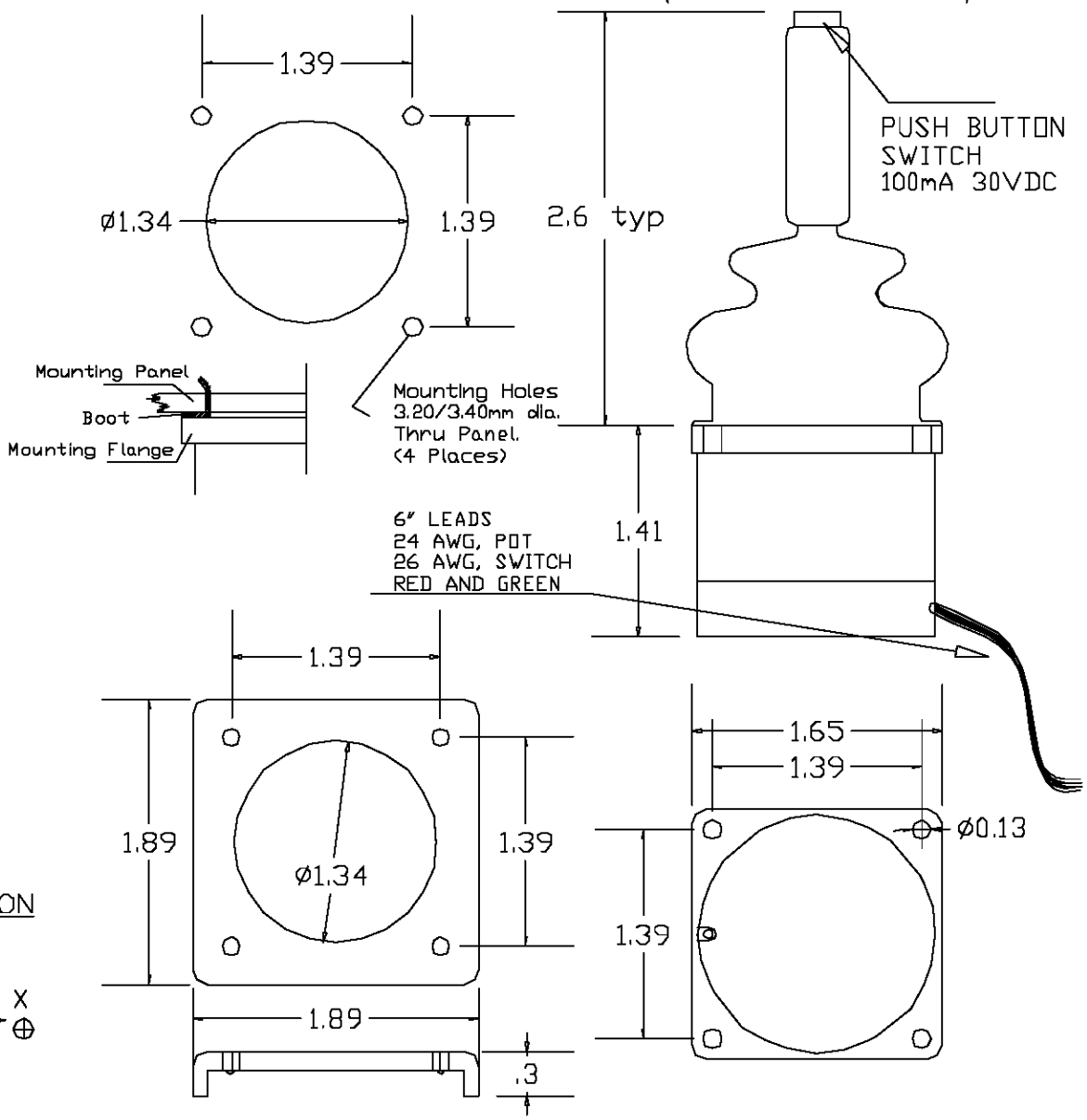
- BODY — — — — — GLASS RE-ENFORCED ABS
- SHAFT MATERIAL — — — — A303 STAINLESS STEEL
- SHAFT DIAMETER — — — — .200 TYPICAL
- WASHER PLATE — — — — BRASS OR ACETAL
- GIMBAL PIVOT — — — — ACETAL
- CENTERING CONE — — — — BRASS OR ACETAL
- SPRING — — — — — STAINLESS STEEL
- PIVOT PINS — — — — — HARDENED STEEL
- LIMITER PLATE — — — — GLASS RE-ENFORCED NYLON
- BEZELS — — — — — GLASS RE-ENFORCED NYLON
- KNOB — — — — — DURAPLAST
- ENVIRONMENTAL — — — — IP 65 ABOVE PANEL
- WEIGHT — — — — — 70g TYPICAL
- SERVICE LIFE — — — — 15 MILLION CYCLES TYPICAL
- BOOT — — — — — VINYL
- LEVER DEFLECTION — — — — ±18°
- SWITCH LIFE — — — — — 500 K

SCHEMATIC



P/N J9-00107

Panel mount  
Detail



ETI  
SYSTEMS  
CARLSBAD  
CALIFORNIA

2251 LAS PALMAS DR.  
CARLSBAD, CA 92009  
PHONE: (760) 929-0749  
FAX: (760) 929-0748  
WWW.ETISYSTEMS.COM

TITLE  
INDUCTIVE  
JOYSTICK  
WITH PUSH BUTTON

PART NO.  
J9-00107