

ELECTRICAL CHARACTERISTICS.

RESISTANCE ELEMENT \_\_\_\_\_ WIRE WOUND  
 RESISTANCE RANGE(OHM) \_\_\_\_\_ 50,100,200,500,1K,5K,10K OHM  
 RESISTANCE TOLERANCE \_\_\_\_\_ ±10%  
 BEST POSSIBLE RESISTANCE TOLERANCE \_\_\_\_\_ ±5%  
 LINEARITY INDEPENDENT \_\_\_\_\_ ±1%  
 BEST POSSIBLE LINEARITY INDEPENDENT \_\_\_\_\_ ±.75%  
 ELECTRICAL ANGLE EUP1125 \_\_\_\_\_ 270°±5°  
 ELECTRICAL ANGLE EUP1100 \_\_\_\_\_ 270°±5° WITH ENDSTOPS  
 TEMPERATURE COEFFICIENT \_\_\_\_\_ ±150 PPM/°C  
 POWER RATING (+70°C) \_\_\_\_\_ 1 WATT  
 INSULATION RESISTANCE \_\_\_\_\_ 1000MEG OHMS @ 500VDC MIN.  
 DIELECTRIC STRENGTH \_\_\_\_\_ 1000 VAC  
 NOISE \_\_\_\_\_ <100 OHM ENR

MECHANICAL CHARACTERISTICS.

ROTATION EUP1125 \_\_\_\_\_ 360° CONTINUOUS  
 ROTATION EUP1100 \_\_\_\_\_ 285° ±5° WITH ENDSTOPS  
 STOP STRENGTH (EUP1100) \_\_\_\_\_ 100 OZ-IN  
 BEARING TYPE \_\_\_\_\_ SLEEVE  
 TORQUE STARTING \_\_\_\_\_ 1.0 OZ.IN.  
 TORQUE RUNNING \_\_\_\_\_ 0.7 OZ. IN.

ENVIRONMENTAL CHARACTERISTICS.

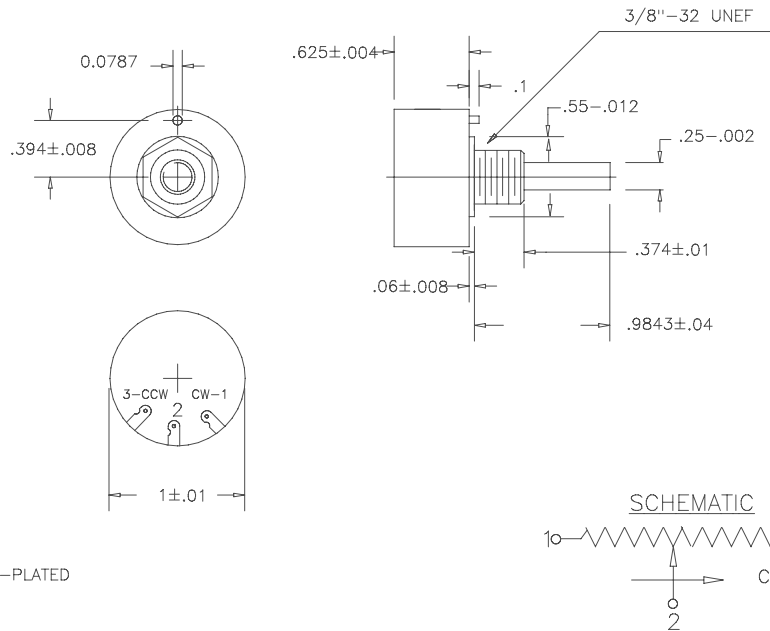
ROTATIONAL LIFE \_\_\_\_\_ 100,000 TURNS MIN.  
 OPERATING TEMPERATURE \_\_\_\_\_ -35°C TO +105°C

MATERIALS

HOUSING \_\_\_\_\_ THERMOSET  
 SHAFT \_\_\_\_\_ BRASS,NICKLE-PLATED  
 TERMINALS \_\_\_\_\_ BRASS, PLATED  
 MOUNTING HARDWARE \_\_\_\_\_ LOCKWASHER,NUT-BRASS,NICKLE-PLATED  
 BUSHINGS \_\_\_\_\_ BRASS, NICKLE PLATED

REV.	BY	DATE	PART NO.
A	AT	2-12-08	EUP1100/1125

NON-TURN PIN LOCATION WAS .375



WIREWOUND ELEMENT

SCALE	NONE
DATE:	5-01-03
BY	AT

THIS DOCUMENT CONTAINS PROPRIETARY DATA OF POLARIS INDUSTRIAL ENTERPRISES, INC. NO DISCLOSURE, REPRODUCTION, OR USE OF ANY PART THERE OF MAY BE MADE EXCEPT BY WRITTEN PERMISSION.



APPRV'D	
CODE IDENT:	19477

TITLE

SINGLE TURN POTENTIOMETER

PART NO.

EUP1100/1125

TOLERANCES

XX = +/- .010" FRACT. = +/- 1/64"  
 XXX = +/- .005" ANGLES = +/- 1/2°

ALL SPECIFICATIONS SUBJECT TO CHANGE WITHOUT NOTICE.