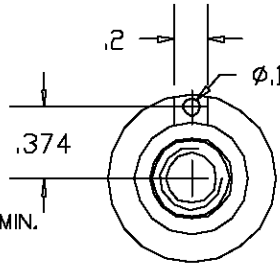
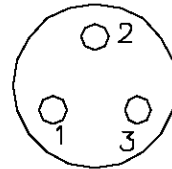


ELECTRICAL CHARACTERISTICS.

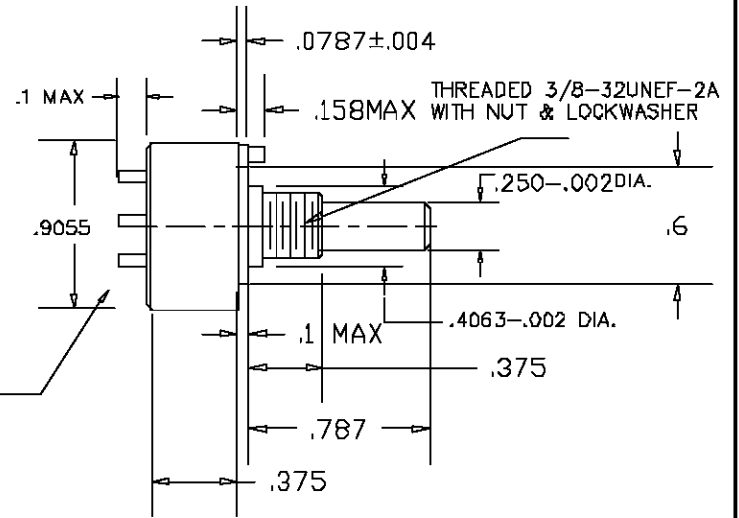
RESISTANCE ELEMENT ----- CONDUCTIVE PLASTIC
 RESISTANCE RANGE(OHM) ----- 1K,5K,10K(OTHER VALUES UPTO 100K)
 RESISTANCE TOLERANCE ----- ±20%
 BEST POSSIBLE RESISTANCE TOLERANCE ----- ±10%
 LINEARITY INDEPENDENT ----- ±2%
 BEST POSSIBLE LINEARITY INDEPENDENT ----- ±1%
 ELECTRICAL ANGLE EUP1910 ----- 340°±4'
 ELECTRICAL ANGLE EUP1960 ----- 320°±4' WITH ENDSTOPS
 RESOLUTION ----- ESSENTIALLY INFINITE
 TEMPERATURE COEFFICIENT ----- ±400 PPM/°C
 POWER RATING (+70°C) ----- 1.0 WATT
 INSULATION RESISTANCE ----- 1000MEGOHMS @ 500VDC MIN.
 DIELECTRIC STRENGTH ----- 750 VAC
 MAXIIMAL WIPER CURRENT ----- 1 mA
 END VOLTAGE ----- <0.5% MAX.



PIN DIA .06



REV.	BY	DATE	PART NO.	EUP1910/1960



MECHANICAL CHARACTERISTICS.

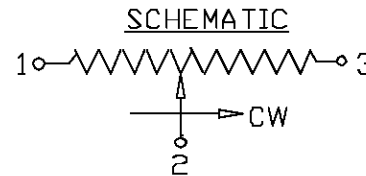
ROTATION EUP1910 ----- 360° CONTINUOUS
 ROTATION EUP1960 ----- 330° ±5° WITH ENDSTOPS
 STOP STRENGTH (EUP1960) ----- 50 OZ-IN
 BEARING TYPE ----- SLEEVE
 TORQUE STARTING ----- 0.30 OZ.IN.
 TORQUE RUNNING ----- 0.25 OZ. IN.

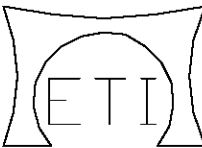
ENVIRONMENTAL CHARACTERISTICS.

ROTATIONAL LIFE ----- 2 MILLION TURNS MIN.
 OPERATING TEMPERATURE ----- -55°C TO +105°C

MATERIALS

HOUSING ----- THERMOSET
 SHAFT ----- STAINLESS STEEL
 TERMINALS ----- GOLD PLATED BRASS
 MOUNTING HARDWARE ----- LOCKWASHER,NUT-BRASS,NICKLE-PLATED
 BUSHINGS ----- BRASS



CONDUCTIVE PLASTIC ELEMENT	SCALE	NONE	THIS DOCUMENT CONTAINS PROPRIETARY DATA OF POLARIS INDUSTRIAL ENTERPRISES, INC. NO DISCLOSURE, REPRODUCTION, OR USE OF ANY PART THERE OF MAY BE MADE EXCEPT BY WRITTEN PERMISSION.	 CARLSBAD CALIFORNIA
	DATE:	5-01-03		
	BY	AT		
<u>TOLERANCES</u> XX = +/- .010" FRACT. = +/- 1/64" XXX = +/- .005" ANGLES = +/- 1/2° ALL SPECIFICATIONS SUBJECT TO CHANGE WITHOUT NOTICE.	APPRV'D		TITLE SINGLE TURN POTENTIOMETER	PART NO. EUP1910/1960
	CODE IDENT:	19477		